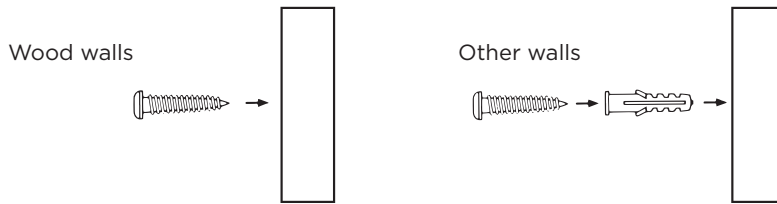


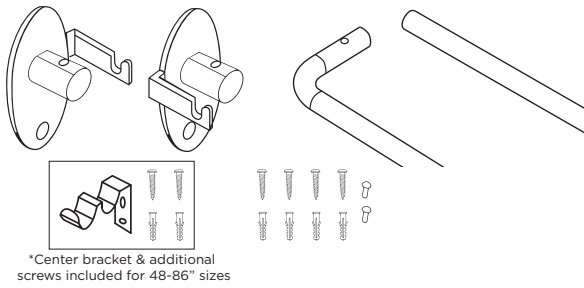


# DOUBLE WRAP ROD Installation Instructions

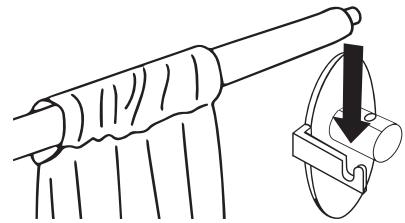
You will need the following tools:  
Pencil - Drill - Screwdriver - Measuring Tape - Level - Step Ladder



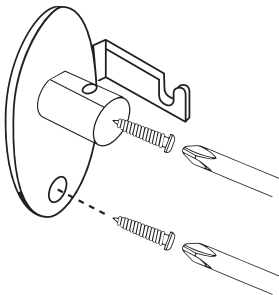
## 1. Remove All Hardware from the Box



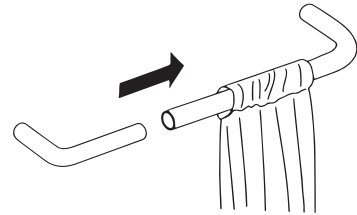
## 4. Snap the End Cap of Each Tube into Brackets



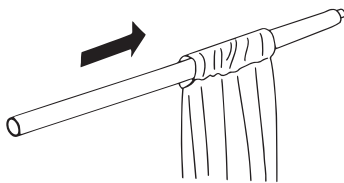
## 2. Install Screw & Attach Bracket to Wall



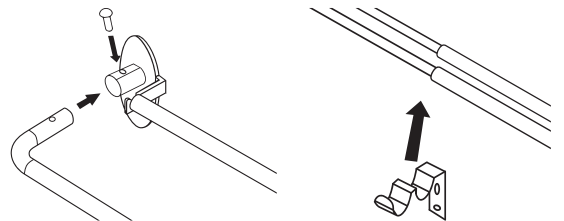
## 5. Slide Curtain onto Front Rod Set



## 3. Slide Curtain onto Back Rod Set



## 6. Insert Front Rod into Brackets and Install Center Support Bracket as Required



For helpful videos & more information visit  
[eclipsecurtains.com](http://eclipsecurtains.com)

or scan the QR code below  
with your smartphone

